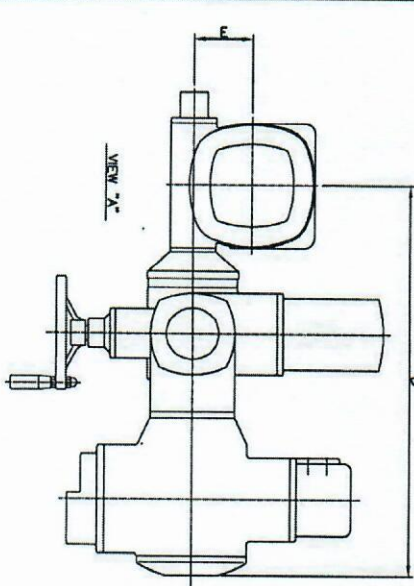
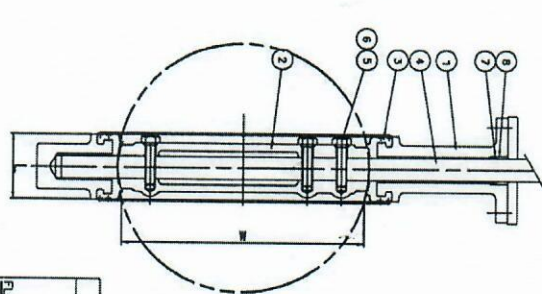
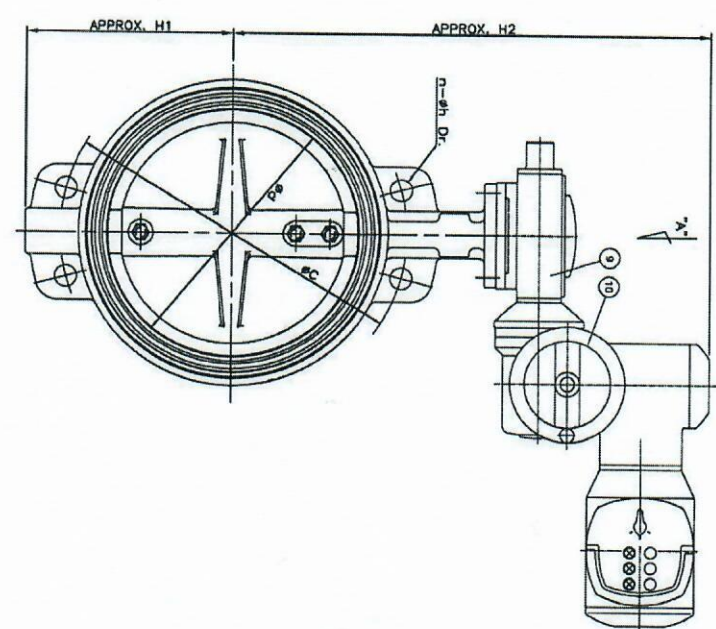


1244. DW 300



DIMENSIONS									
NOMINAL DIAMETER	Ød	L	FLANGE ØC	n-Øh	H1	H2	B	E	W
300(12")	292	78	431.8	12-25	245	610	545	80	281
UNIT: mm									
FLANGE RATING : ANSI B 16.5 CLASS 300									
ACTUATOR MODEL SAM07.5									

TAG NO. & HANDLE ORIENTATION		
NOMINAL DIAMETER	TAG NO.	HANDLE ORIENTATION
300(12")	100AC20A811, 100AC11A811	2 3



P.NO.	PART NAME	MATERIAL	QTY	REMARK
1	BODY	A218NCE	1	
2	DISC	A351CF8	1	
3	SEAT RING	EPDM	1	
4	STEM	A278304	1	
5	DISC BOLT	A193-B8	3	
6	O-RING	EPDM	3	
7	PACKING	EPDM	1	
8	PACKING GLAND	BS6403300	1	
9	GEAR BOX	ASSY	1	
10	ACTUATOR	ASSY	1	

NOTES

1. "W" DIMENSION IS THE MINIMUM ALLOWABLE FLANGE INSIDE DIAMETER OR PIPE INSIDE DIAMETER AT THE CENTERED BODY FACE WHEN IN THE OPEN POSITION
2. HYDROSTATIC TEST
-BODY : 450 PSIG
-SEAT : 165 PSIG
3. FACE TO FACE : API 609
4. BODY MARKING
150LB
WCB
SIZE
SJ

FINAL

Δ									
Δ									
Δ									
Δ									
Δ									
Δ									
Δ									
Δ									
Δ									
Δ									
Δ									
Δ									
Δ									
Δ									
Δ									
Δ									
Δ									
Δ									
Δ									
Δ									
Δ									
Δ									
Δ									
Δ									
Δ									
Δ									
Δ									
Δ									
Δ									
Δ									
Δ									
Δ									
Δ									
Δ									
Δ									
Δ									
Δ									
Δ									
Δ									
Δ									
Δ									
Δ									
Δ									
Δ									
Δ									
Δ									
Δ									
Δ									
Δ									
Δ									
Δ									
Δ									
Δ									
Δ									
Δ									
Δ									
Δ									
Δ									
Δ									
Δ									
Δ									
Δ									
Δ									
Δ									
Δ									
Δ									
Δ									
Δ									
Δ									
Δ									
Δ									
Δ									
Δ									
Δ									
Δ									
Δ									
Δ									
Δ									
Δ									
Δ									
Δ									
Δ									
Δ									
Δ									
Δ									
Δ									
Δ									
Δ									
Δ									
Δ									
Δ									
Δ									
Δ									
Δ									
Δ									
Δ									
Δ									
Δ									
Δ									
Δ									
Δ									
Δ									
Δ									
Δ									
Δ									
Δ									
Δ									
Δ									
Δ									
Δ									
Δ									
Δ									
Δ									
Δ									
Δ									
Δ									
Δ									
Δ									
Δ									
Δ									
Δ									
Δ									
Δ									

* Yerevan Thermal Power Plant *
Closed Joint Stock Company

PROJECT TITLE
YEREVAN COMBINED CYCLE
CO-GENERATION POWER PLANT

CONSULTANT
TEPSCO
TOKYO ELECTRIC POWER SERVICES CO., LTD.


CONTRACTOR
THE CONSORTIUM OF
AMURAKO, LTD. & Engineering & Construction

Sanjin Limited
6-1, BUDOK-CHO, CHINA, 10001

TITLE
WATER TYPE ANSI #150
MOTOR OPERATED BUTTERFLY VALVE

SCALE	PROJNO	DRAWING NO.	SHEET NO.
MOORE	7500	SC-016-0012	1/1

Appendix #2

 Samshin Limited 63-6, DUJONG-DONG, CHONAN, KOREA					
MOTOR OPERATED VALVE DATA SHEET			DATA SHEET . NO.	REV.	
PRE'D : S.Y. LIM		CHK'D : Y.R. JO	APP'D : B.S. PARK	DATE : '10.02.10	MOV-22
PROJ. NAME : YEREVAN COMBINED CYCLE POWER PLANT					
SITE : ARMENIA			UNIT :		
COMMON	1	Valve No.	10GAC20AA811		
	2	Service	Industrial Water (for CW make up)		
	3	Line Number	10GAC20BR001		
	4	Type / Size	Butterfly / DN300		
	5	Total Quantity	1	SET(S)	
	6	Location	Outdoor		
	7	Rating	ASME CL. 300		
	8	Normal Position	Close		
	9	Valve End Conn.	Wafer		
	10	Operating	Pressure	8	barg
	11		Temperature	18	°C
	12		Flow Rate	374	ton/hr
	13	Design	Pressure	12	barg
	14		Temperature	40	°C
	15		Flow Rate	300	ton/hr
	16	Material	Body	A216 Gr. WCB	
	17		Disc	SS304	
	18		Seat	Rubber	
	19		Shaft	SS304	
	20	Leakage Class	As per API 598		
	21	Bonnet Type	Maker's Standard		
	22	Yoke Type	N/A		
	23	Vacuum Service			
	24	Open / Close Time	Max. 13	sec	
	25	Seating Method	Open: Limit, Close: Limit		
	26	Turn for Full Open to Close	13.3	rev.	
	27	Function	On / Off		
	28	Operation Mode	Open / Close		
	29	Type / Size	AC Motor / *		
	30	Enclose Type	IP67		
ACTUATOR	31	Position Limit Switch	Yes(Open/Close)		
	32	Position Indicator	Yes		
	33	Torque Setting	60	Nm	
	34	Torque Limit Switch	Yes(Open/Close)		
	35	Output RPM	63	RPM	
	36	Handwheel / Location	Yes / Side		
	37	Declutch Method	Manual		
	38	Control Voltage	24	V	
	39	Power Source	400V, 3Ph, 50Hz		
	40	Electric Conduit	Control	1-1/2" NPT x 1	
	41		Power	3/4" NPT x 1	
	42		Signal	3/4" NPT x 1	
	43	Actuator model	SA07.5/AM01.1+GS80.3		
	44	Painting	KN / Standard		
	45	Color	Silver grey		
	46	Wiring diagram	MSP 1110KC3-F1JE1		
	47	Actuator Manufacturer	AUMA		
MOTOR	48	Output	0.75	KW	
	49	Time Rating (DUTY)	S2-15	MIN	
	50	Pole	2		
	51	Temperature Rise	B		
	52	Insulation Class	F		
	53	Starting Current	9		
	54	Rated Current	1.7	A	
	55	Min. Efficient	78	%	
	56	Power Factor	80	%	
	57	Max. Overtorque	1800		
	58	Starter Location	Integrated		
	59	Enclosures	IP67		
	60	Rpm	2800		
	61	Motor Protection	3 THERMO-S / W		
	62	Power Source	400V, 3Ph, 50Hz		
	63	Space Heater	Yes		
	64	Local / Remote Selector Switch	Yes		
65	(Integrated, Lockable)				
66	Position Transmitter	NO			
67	(Output : 4 ~ 20 mA DC)				
68	Position Indicator	Yes			
69	(Mechanical Indicator)				
70	Open / Close / Stop Push Button	Yes			
71	and Lamp (Integrated)	(Red/ Green/ Yellow)			
72	Thermostat	Yes			
73	Reversing Controller	Yes			
74	Transformer	Yes			
75	Over Load Protection Relay	Yes			
76	Lubricant	Yes			
77	Terminal Plan	TP 110/201			
78	POTENTIOMETER	NO			
79	STEM PROTECTION TUBE	Yes			
80	CABLE ENTRIES	2x3/4"NPT / 1x1-1/2"NPT			
81	Gross Weight	kg			
82	Valve Manufacturer	Samshin Limited			