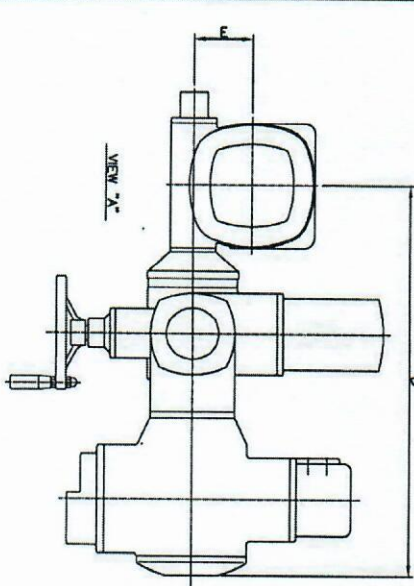
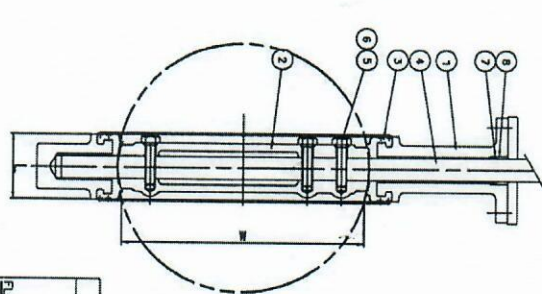
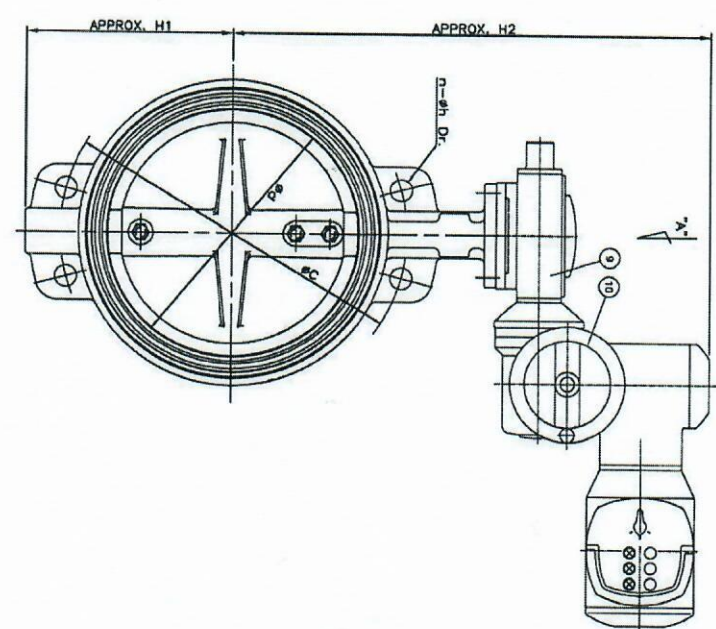


1244. DW 300



DIMENSIONS									
NOMINAL DIAMETER	Ød	L	FLANGE ØC	n-Øh	H1	H2	B	E	W
300(12")	292	78	431.8	12-25	245	610	545	80	281
UNIT: mm									
FLANGE RATING : ANSI B 16.5 CLASS 300									
ACTUATOR MODEL SAM07.5									

TAG NO. & HANDLE ORIENTATION		
NOMINAL DIAMETER	TAG NO.	HANDLE ORIENTATION
300(12")	100AC20A811, 100AC11A811	2 3



P.N.O.	PART NAME	MATERIAL	QTY	REMARK
1	BODY	A218BC3	1	
2	DISC	A351C7B	1	
3	SEAT RING	EPDM	1	
4	STEM	A278304	1	
5	DISC BOLT	A193-B8	3	
6	O-RING	EPDM	3	
7	PACKING	EPDM	1	
8	PACKING GLAND	BS6403300	1	
9	GEAR BOX	ASSY	1	
10	ACTUATOR	ASSY	1	

NOTES

1. "W" DIMENSION IS THE MINIMUM ALLOWABLE FLANGE INSIDE DIAMETER OR PIPE INSIDE DIAMETER AT THE CENTERED BODY FACE WHEN IN THE OPEN POSITION
2. HYDROSTATIC TEST
-BODY : 450 PSIG
-SEAT : 165 PSIG
3. FACE TO FACE : API 609
4. BODY MARKING
150LB
WCB
SIZE
SJ

FINAL

REV.	DATE	DESCRIPTION	BY	CHK
1		FINAL	RELX	AKR
2			RELX	AKR
3			RELX	AKR
4			RELX	AKR
5			RELX	AKR
6			RELX	AKR
7			RELX	AKR
8			RELX	AKR
9			RELX	AKR
10			RELX	AKR

* Yerevan Thermal Power Plant *
Closed Joint Stock Company

PROJECT TITLE
YEREVAN COMBINED CYCLE
CO-GENERATION POWER PLANT

CONSULTANT
TEPSCO
TOKYO ELECTRIC POWER SERVICES CO., LTD.


CONTRACTOR
THE CONSORTIUM OF
Mitsubishi Corp. & Engineering & Construction

Sanjin Limited
6-1, BUDOK-CHO, CHINA, 10001

TITLE
WATER TYPE ANSI #150
MOTOR OPERATED BUTTERFLY VALVE

SCALE	PROJNO	DRAWING NO.	SHEET NO.
1/1	7500	SC-016-0012	1/1

Appendix #2

 Samshin Limited 63-6, DUJONG-DONG, CHONAN, KOREA				
MOTOR OPERATED VALVE DATA SHEET			DATA SHEET . NO.	REV.
PRED : S.Y. LIM	CHK'D : Y.R. JO	APP'D : B.S. PARK	DATE : '10.02.10	MOV-22
PROJ. NAME : YEREVAN COMBINED CYCLE POWER PLANT				
SITE : ARMENIA		UNIT :		
COMMON	1	Valve No.	10GAC20AA811	
	2	Service	Industrial Water (for CW make up)	
	3	Line Number	10GAC20BR001	
	4	Type / Size	Butterfly / DN300	
	5	Total Quantity	1	SET(S)
	6	Location	Outdoor	
	7	Rating	ASME CL. 300	
	8	Normal Position	Close	
	9	Valve End Conn.	Wafer	
	10	Operating	Pressure	8 barg
	11		Temperature	18 °C
	12		Flow Rate	374 ton/hr
	13	Design	Pressure	12 barg
	14		Temperature	40 °C
	15		Flow Rate	300 ton/hr
	16	Material	Body	A216 Gr. WCB
	17		Disc	SS304
	18		Seat	Rubber
	19		Shaft	SS304
	20	Leakage Class	As per API 598	
	21	Bonnet Type	Maker's Standard	
	22	Yoke Type	N/A	
	23	Vacuum Service		
	24	Open / Close Time	Max. 13	sec
	25	Seating Method	Open: Limit, Close: Limit	
	26	Turn for Full Open to Close	13.3	rev.
	27	Function	On / Off	
	28	Operation Mode	Open / Close	
	29	Type / Size	AC Motor / *	
	30	Enclose Type	IP67	
ACTUATOR	31	Position Limit Switch	Yes(Open/Close)	
	32	Position Indicator	Yes	
	33	Torque Setting	60	Nm
	34	Torque Limit Switch	Yes(Open/Close)	
	35	Output RPM	63	RPM
	36	Handwheel / Location	Yes / Side	
	37	Declutch Method	Manual	
	38	Control Voltage	24	V
	39	Power Source	400V, 3Ph, 50Hz	
	40	Electric Conduit	Control	1-1/2" NPT x 1
	41		Power	3/4" NPT x 1
	42		Signal	3/4" NPT x 1
	43	Actuator model	SA07.5/AM01.1+GS80.3	
	44	Painting	KN / Standard	
	45	Color	Silver grey	
	46	Wiring diagram	MSP 1110KC3-F1JE1	
	47	Actuator Manufacturer	AUMA	
MOTOR	48	Output	0.75	KW
	49	Time Rating (DUTY)	S2-15	MIN
	50	Pole	2	
	51	Temperature Rise	B	
	52	Insulation Class	F	
	53	Starting Current	9	
	54	Rated Current	1.7	A
	55	Min. Efficient	78	%
	56	Power Factor	80	%
	57	Max. Overtorque	1800	
	58	Starter Location	Integrated	
	59	Enclosures	IP67	
	60	Rpm	2800	
	61	Motor Protection	3 THERMO-S / W	
	62	Power Source	400V, 3Ph, 50Hz	
	63	Space Heater	Yes	
	64	Local / Remote Selector Switch (Integrated, Lockable)	Yes	
65	Position Transmitter (Output : 4 ~ 20 mA DC)	NO		
66	Position Indicator (Mechanical Indicator)	Yes		
67	Open / Close / Stop Push Button and Lamp (Integrated)	Yes (Red/ Green/ Yellow)		
68	Thermostat	Yes		
69	Reversing Controller	Yes		
70	Transformer	Yes		
71	Over Load Protection Relay	Yes		
72	Lubricant	Yes		
73	Terminal Plan	TP 110/201		
74	POTENTIOMETER	NO		
75	STEM PROTECTION TUBE	Yes		
76	CABLE ENTRIES	2x3/4"NPT / 1x1-1/2"NPT		
77	Gross Weight	kg		
78	Valve Manufacturer	Samshin Limited		
79				